

Hansa Luftbild
German Air Surveys

Serge Bédard
International
project manager
Hansa Luftbild



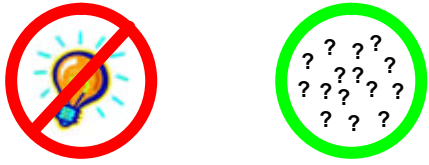
**GIS in 20 years:
Where is the future taking us?**

Serge Bédard
Munich, October 2008 TS 62 - SIM - Policy and Strategy
GIS in 20 years. Where is the future taking us?

Hansa Luftbild
German Air Surveys

About this presentation

This presentation raises more questions than it brings answers



Serge Bédard
Munich, October 2008 TS 62 - SIM - Policy and Strategy
GIS in 20 years. Where is the future taking us?

Hansa Luftbild
German Air Surveys

About this presentation

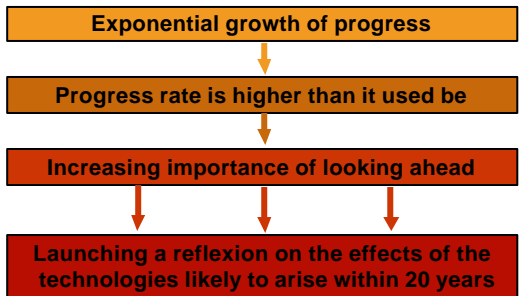
It doesn't try to predict the future



Serge Bédard
Munich, October 2008 TS 62 - SIM - Policy and Strategy
GIS in 20 years. Where is the future taking us?

Hansa Luftbild
German Air Surveys

Goal of this presentation



Serge Bédard
Munich, October 2008 TS 62 - SIM - Policy and Strategy
GIS in 20 years. Where is the future taking us?

Hansa Luftbild
German Air Surveys

Introduction

- The field of GIS is widely based on advanced technology
- We have seen a huge progress in the technology in general during the last twenty years
- This progress has had a tremendous impact on how we accomplish our work today

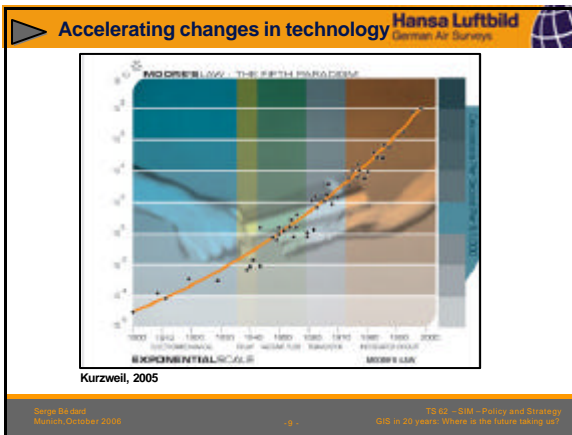
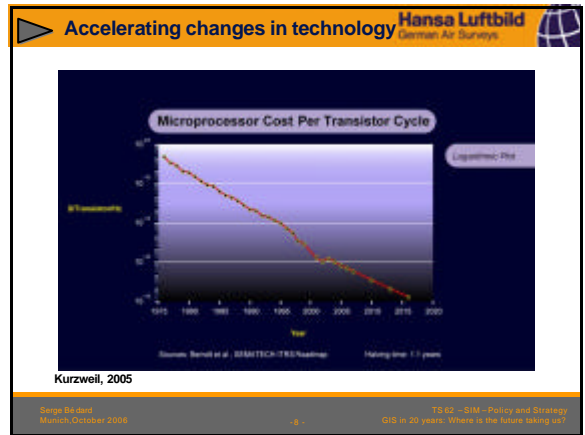
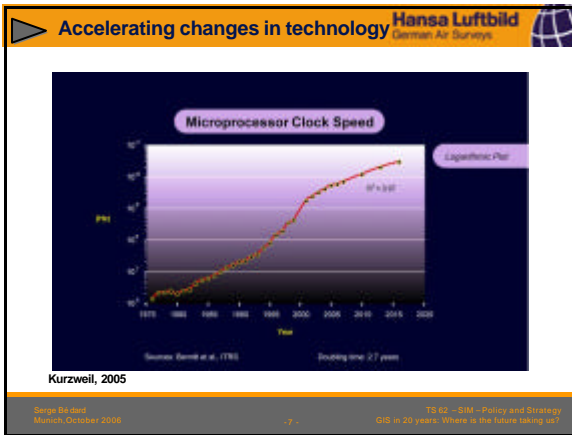
Serge Bédard
Munich, October 2008 TS 62 - SIM - Policy and Strategy
GIS in 20 years. Where is the future taking us?

Hansa Luftbild
German Air Surveys

Introduction

- As we will see, the rate of technological progress is increasing in a exponential way
- Due to the acceleration of progress the next twenty years ought to experience even bigger changes
- Let's try to extrapolate to see what's coming

Serge Bédard
Munich, October 2008 TS 62 - SIM - Policy and Strategy
GIS in 20 years. Where is the future taking us?



Accelerating changes in technology Hansa Luftbild
German Air Surveys

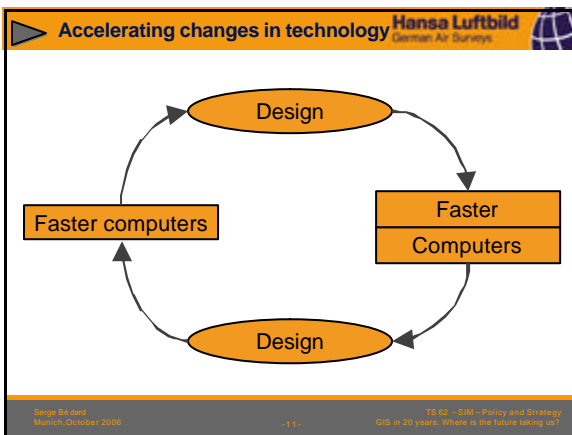
Doubling or halving time

| Technology | Time in years |
|--|---------------|
| Dynamic RAM (bits per dollar) | 1.5 |
| Average transistor price | 1.6 |
| Microprocessor Cost-per-Transistor cycle | 1.1 |
| Processor performance in MIPS | 1.8 |
| Transistors in Intel microprocessors | 2.0 |
| Microprocessor clock speed | 3.0 |


Kurzweil, 2005

Serge Beaud
Munich, October 2008

TS 62 – SIM – Policy and Strategy
GIS in 20 years: Where is the future taking us?




Autonomous driving
Hansa Luftbild
German Air Surveys

In the 80's


Serge Beaud
Munich, October 2008
TS 62 – SIM – Policy and Strategy
GIS in 20 years: Where is the future taking us?
13

Autonomous driving
Hansa Luftbild
German Air Surveys

DARPA Grand Challenge



Serge Beaud
Munich, October 2008
TS 62 – SIM – Policy and Strategy
GIS in 20 years: Where is the future taking us?
14

Autonomous driving
Hansa Luftbild
German Air Surveys

DARPA Grand Challenge



Serge Beaud
Munich, October 2008
TS 62 – SIM – Policy and Strategy
GIS in 20 years: Where is the future taking us?
15

Autonomous driving
Hansa Luftbild
German Air Surveys

Freeing highways


Serge Beaud
Munich, October 2008
TS 62 – SIM – Policy and Strategy
GIS in 20 years: Where is the future taking us?
16

Autonomous driving
Hansa Luftbild
German Air Surveys

Car parking


Serge Beaud
Munich, October 2008
TS 62 – SIM – Policy and Strategy
GIS in 20 years: Where is the future taking us?
17

Personal nanofactory
Hansa Luftbild
German Air Surveys



Serge Beaud
Munich, October 2008
TS 62 – SIM – Policy and Strategy
GIS in 20 years: Where is the future taking us?
18

Personal nanofactory

Hansa Luftbild
German Air Surveys

Sending objects via e-mails



Serge Beaud
Munich, October 2006

TS 62 - SIM - Policy and Strategy
GIS in 20 years: Where is the future taking us?

-18-

Personal nanofactory

Hansa Luftbild
German Air Surveys

Impacts on delivery



Serge Beaud
Munich, October 2006

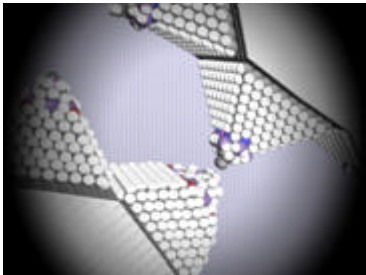
TS 62 - SIM - Policy and Strategy
GIS in 20 years: Where is the future taking us?

-19-

Personal nanofactory

Hansa Luftbild
German Air Surveys

Nanorecycler



Serge Beaud
Munich, October 2006

TS 62 - SIM - Policy and Strategy
GIS in 20 years: Where is the future taking us?

-21-

Personal nanofactory

Hansa Luftbild
German Air Surveys

Impact on waste sites



Serge Beaud
Munich, October 2006

TS 62 - SIM - Policy and Strategy
GIS in 20 years: Where is the future taking us?

-22-

Miniaturization of GPS receivers

Hansa Luftbild
German Air Surveys

Mini GPS receiver



Serge Beaud
Munich, October 2006

TS 62 - SIM - Policy and Strategy
GIS in 20 years: Where is the future taking us?

-23-

Miniaturization of GPS receivers

Hansa Luftbild
German Air Surveys

Mini GPS receiver



Serge Beaud
Munich, October 2006

TS 62 - SIM - Policy and Strategy
GIS in 20 years: Where is the future taking us?

-24-

Miniaturization of GPS receivers Hansa Luftbild
German Air Surveys

Tracking daily objects



Serge Beaud
Munich, October 2008

TS 62 - SIM - Policy and Strategy
GIS in 20 years: Where is the future taking us?

25

Miniaturization of GPS receivers Hansa Luftbild
German Air Surveys

Monitoring glaciers...




Serge Beaud
Munich, October 2008

TS 62 - SIM - Policy and Strategy
GIS in 20 years: Where is the future taking us?

26

Miniaturization of GPS receivers Hansa Luftbild
German Air Surveys

... or tornadoes...




Serge Beaud
Munich, October 2008

TS 62 - SIM - Policy and Strategy
GIS in 20 years: Where is the future taking us?

27

Miniaturization of GPS receivers Hansa Luftbild
German Air Surveys

... or volcanoes



Serge Beaud
Munich, October 2008

TS 62 - SIM - Policy and Strategy
GIS in 20 years: Where is the future taking us?

28

Other technologies to explore Hansa Luftbild
German Air Surveys

- Augmented reality
- Neurone/chip interface
- On the fly translation
- <insert your technology here>

Serge Beaud
Munich, October 2008

TS 62 - SIM - Policy and Strategy
GIS in 20 years: Where is the future taking us?

29

Conclusion Hansa Luftbild
German Air Surveys

- Importance of social and economical factors in the adoption of a technology
- Predicting the future is a difficult task, especially 20 years in advance.
- Importance of being carefull with prediction.
- I suggest a brainstorm session on the topic.

Serge Beaud
Munich, October 2008

TS 62 - SIM - Policy and Strategy
GIS in 20 years: Where is the future taking us?

30



Thank you for your attention

Hansa Luftbild
German Air Surveys



From...



...to

